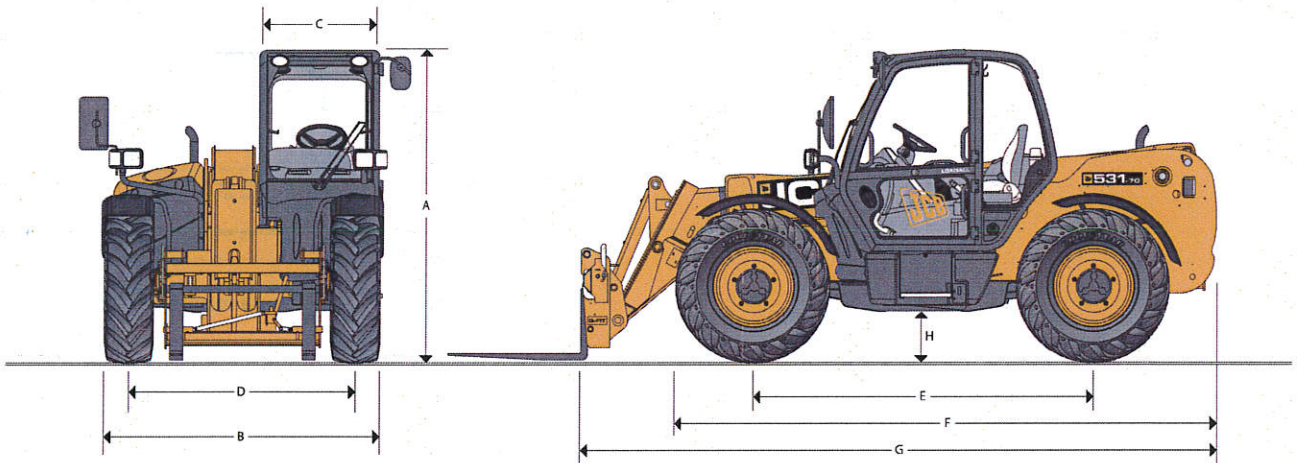




JCB LOADALL - TIER 4i | 531-70 / 535-140_{HMZ} / 550-140 / 550-170

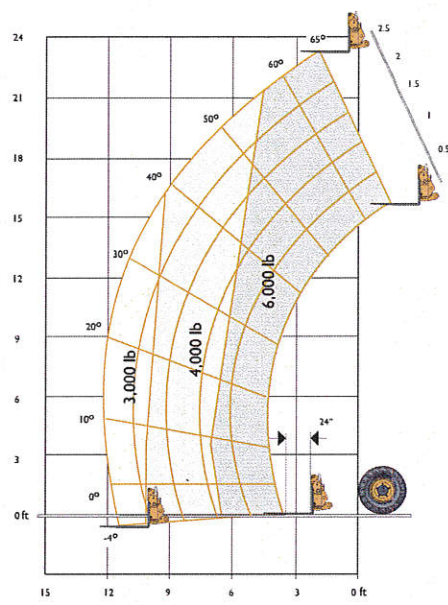
MAX PAYLOAD: 6,000 lb (2,722 kg) MAX LIFT HEIGHT: 23 ft (7.0 m) MAX HORSEPOWER: 74 hp (55 kW)



STATIC DIMENSIONS 531-70

Machine Model	531-70	Machine Model	531-70
	ft-in (m)		ft-in (m)
A Overall Height	8-2 (2.49)	G Overall Length to Front Carriage	16-4 (4.99)
B Overall Width (over tires)*	7-4 (2.23)	H Ground Clearance	1-4 (0.40)
C Inside Width of Cab	3-1 (0.94)	Outside Turn Radius (over tires)	12-2 (3.70)
D Front Track	5-11 (1.81)	Weight	15,560 (7060) lb (kg)
E Wheelbase	9-0 (2.75)	Tires	15.5/80-24
F Overall Length to Front Tires	14-4 (4.38)		

*Dependant upon tire specified.



Chassis Levelling (Sway)
With stabilizers retracted (Sway angle ±9°)

LIFT PERFORMANCE – 531-70 SWAY FRAME

Maximum Lift Capacity	lb (kg)	6000 (2722)
Lift Capacity to Full Height	lb (kg)	6000 (2722)
Lift Capacity at Full Reach	lb (kg)	3000 (1250)
Lift Height	ft-in (m)	23-0 (7.0)
Reach at Maximum Lift Height	ft-in (m)	2-0 (0.61)
Maximum Forward Reach	ft-in (m)	12-2 (3.84)

Complies with stability test ASME B56.6