

**SANY PALFINGER**

Modell **SPK 36080 HPLS**  
Model Type

**SPK 36080 A**

起重性能曲线

Lifting capacity diagram

Diagramme de capacit

BASED ON **DT3140SHA/04**

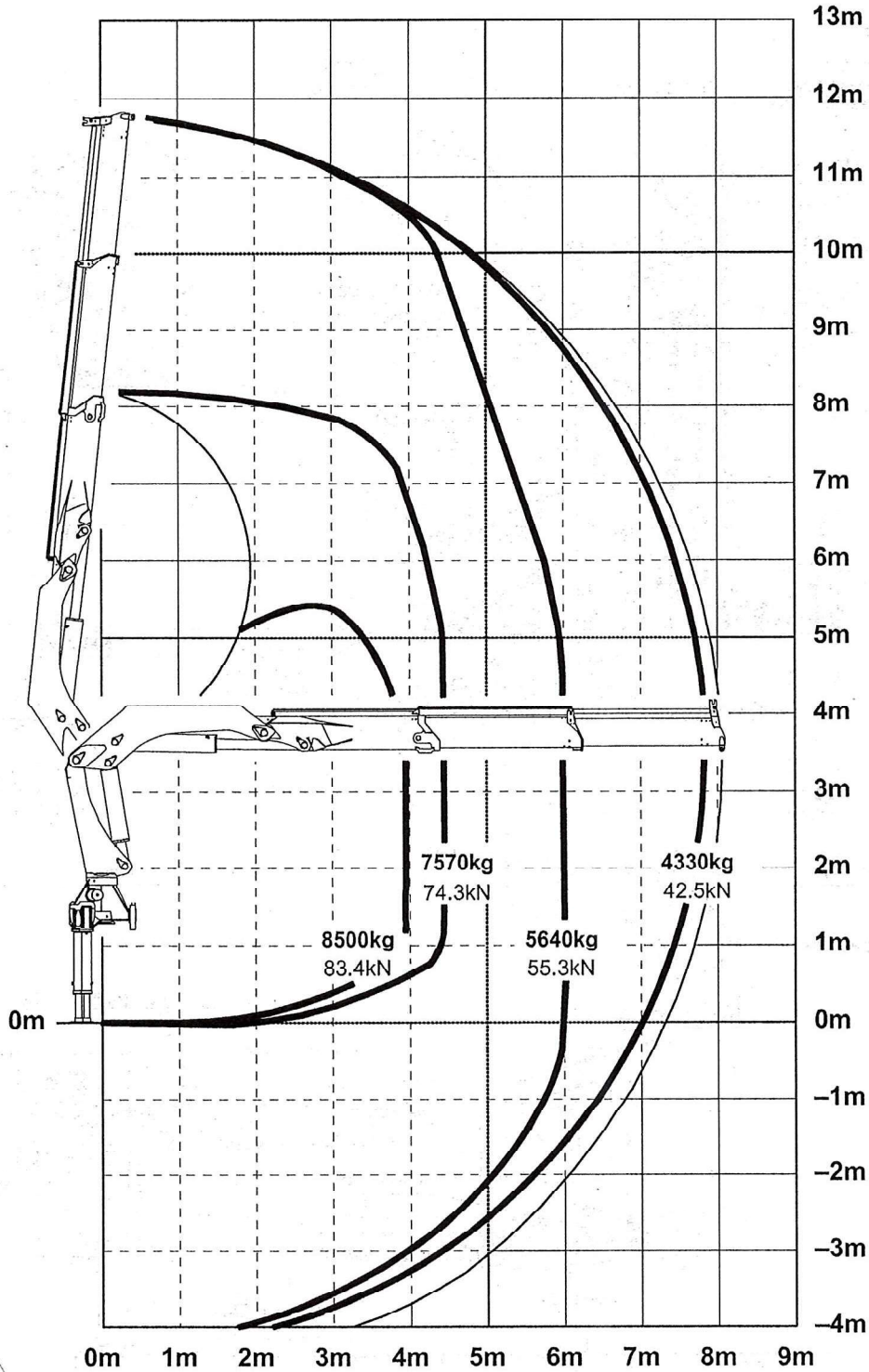
Kapitel Chapter Chapitre

**0100**

Seite Page Page

**05/2016**

Ausgabe Edition Edition



制造公差考虑在内。  
Production tolerances have to be taken into account.  
Tolérances de conception. Les tolérances relatives à la technique de production doivent être prises en considération.

类别: EN12999的H1/B3类  
Classification: H1/B3 in EN12999  
Classement: H1/B3 en mesure EN12999

**SANY PALFINGER**

Modell Model Type

**SPK 36080 HPLS**

SPK 36080 B

起重性能曲线

Lifting capacity diagram

Diagramme de capacit

BASED ON DT3140SHA/04

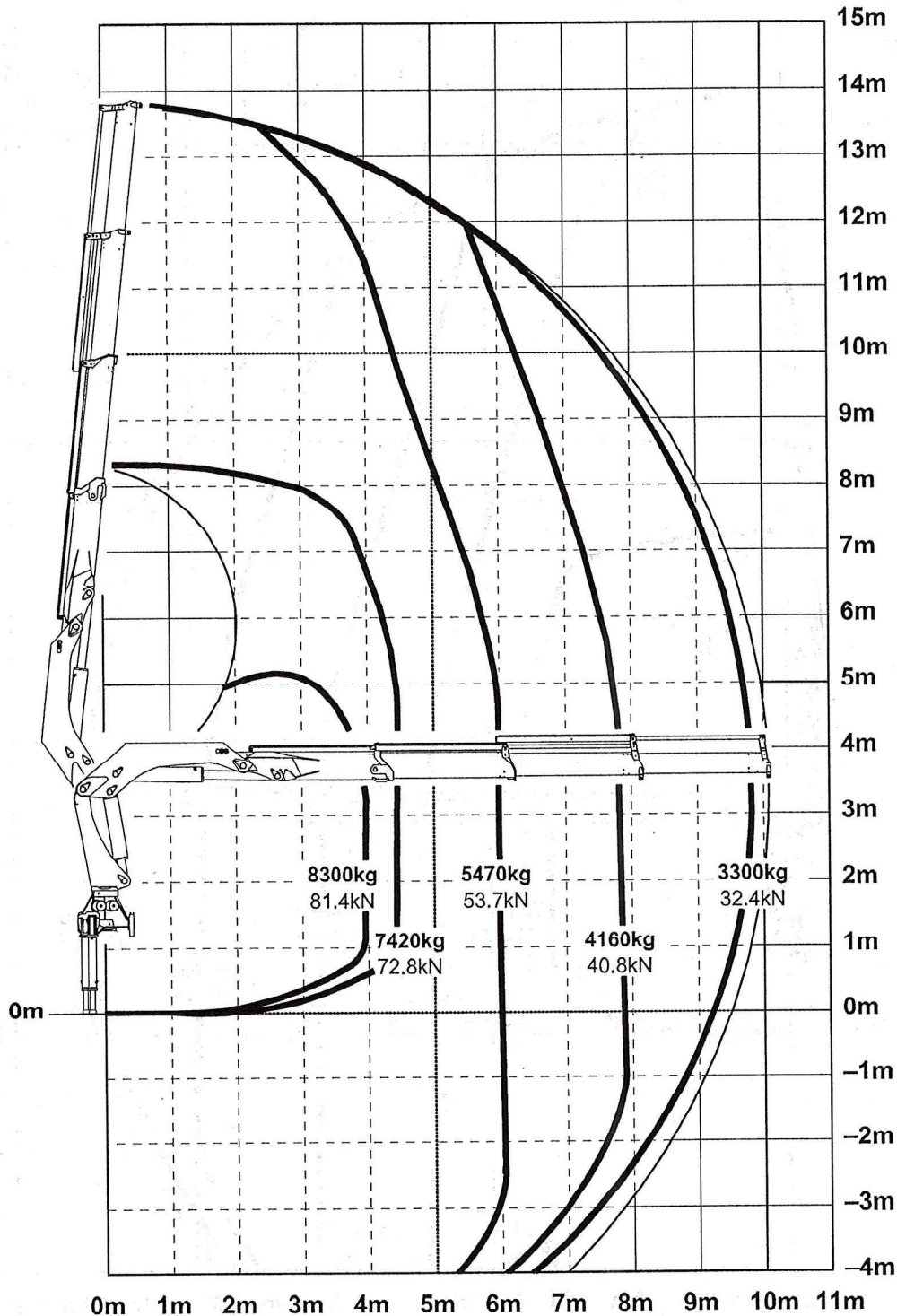
Kapitel Chapter Chapitre

0200

Seite Page Page

05/2016

Ausgabe Edition Edition



如果变更, 必须把制造公差考虑在内。  
Subject to change, production tolerances have to be taken into account.  
Sous reserve de modifications de conception. Les tolérances relatives à la technique de production doivent être prises en consideration.

类别: EN12999的H1/B3类  
Classification: H1/B3 in EN12999  
Classement: H1/B3 en mesure EN12999

**SANY PALFINGER**

Modell Model Type  
**SPK 36080 HPLS**

**SPK 36080 C**

起重性能曲线

Lifting capacity diagram

Diagramme de capacité

BASED ON DT3140SHA/04

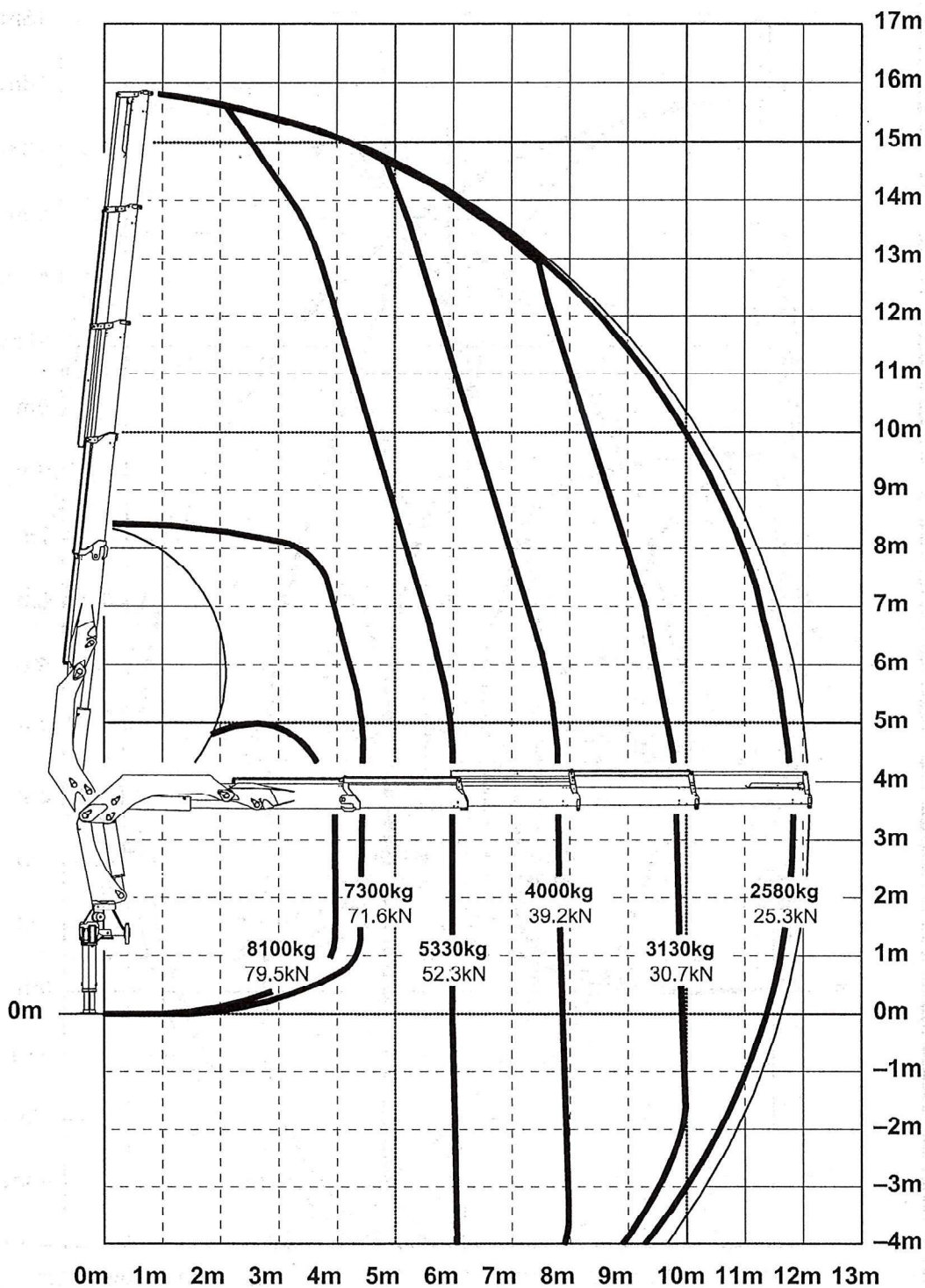
Kapitel Chapter Chapitre

0300

Seite Page Page

05/2016

Ausgabe Edition Edition



考虑在内。  
Tolerances have to be taken into account.  
Les tolérances relatives à la technique de production doivent être prises en considération.

类别: EN12999的H1/B3类  
Classification: H1/B3 in EN12999  
Classement: H1/B3 en mesure EN12999